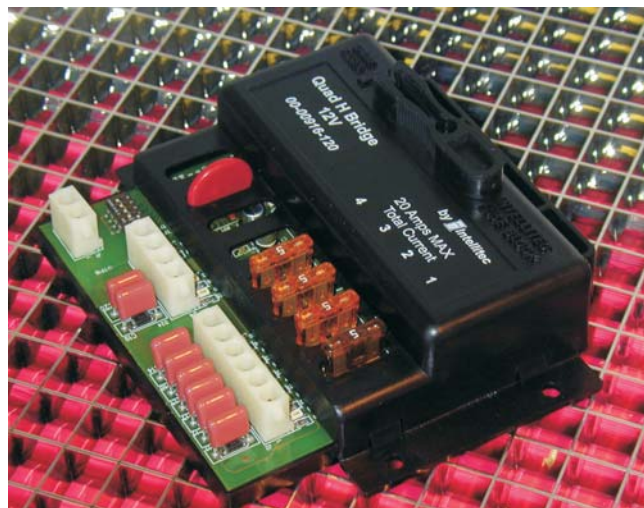


## 00-00916-120 PMC Output Modules

Each of the outputs can also be used as individual outputs with the understanding that the load will be grounded when turned off. This allows the module to power up to 8 individual loads.

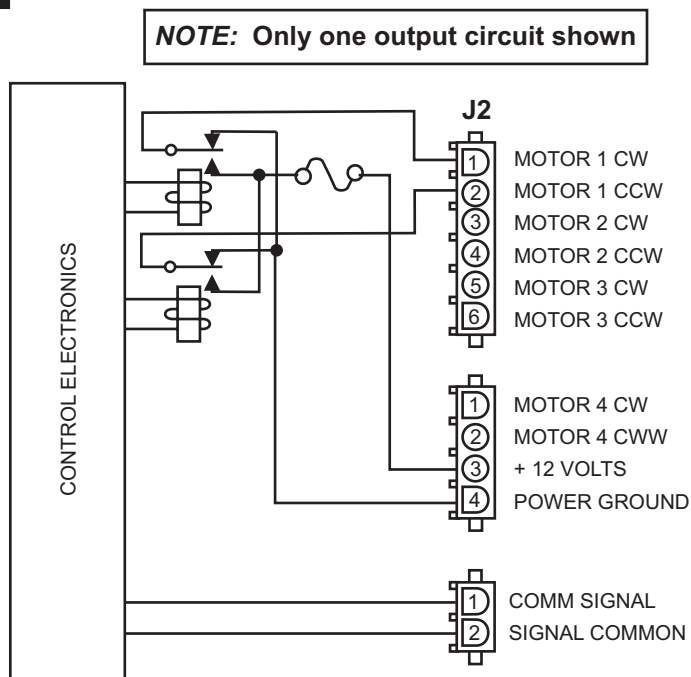


PAT NO. 4.907.222 &amp; 6.011.997

*The module should be installed in a protected environment, inside the vehicle.*

TRUTH TABLE EXAMPLE						
PMC CH 1	PMC CH 2	PMC CH 9	PMC CH 10	MOTOR 1	J2-1	J2-2
OFF	OFF	OFF	OFF	OFF	GND	GND
ON	OFF	OFF	OFF	CW	BAT+	GND
OFF	ON	OFF	OFF	CCW	GND	BAT+
ON	ON	OFF	OFF	OFF	BAT+	BAT+
OFF	OFF	ON	OFF	CW	BAT+	GND
OFF	OFF	OFF	ON	CCW	GND	BAT+

Repeat for motors 2,3 and 4  
Channels 9 & 10 affect all motors





131 Eisenhower Lane N., Lombard, IL 60148  
630 268 0010 800 251 2408  
www.intellitec.com

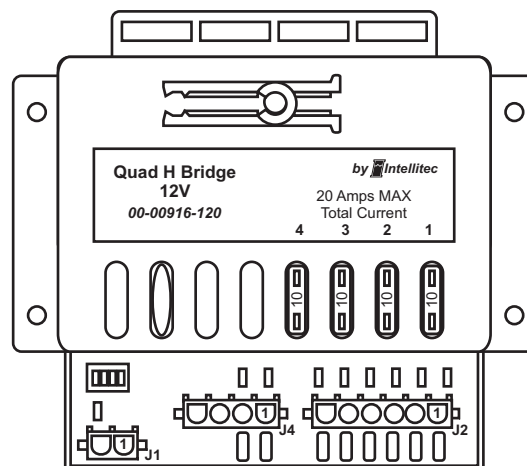
## Quad "H" Bridge Output Module

### 00-00916-120 PMC Output Modules

#### SPECIFICATIONS

##### General Connections

General Connections		00-00916-120
Nominal Vehicle Voltage		12V
Module Current		20 Amp Max
J4-3	+ 12 Volts	
J4-4	Ground	
J1-1	PMC Signal	18 awg Min
J1-2	PMC Ground	14 awg Min



#### CHANNEL DESIGNATIONS

Channel	Relay	Connection	Type	Fuse	Rating
1	Relay 1	J2-1	Relay Output, Form C (SPDT)	Fuse 1	10 Amp Max
2	Relay 2	J2-2	Relay Output, Form C (SPDT)	Fuse 1	10 Amp Max
3	Relay 3	J2-3	Relay Output, Form C (SPDT)	Fuse 2	10 Amp Max
4	Relay 4	J2-4	Relay Output, Form C (SPDT)	Fuse 2	10 Amp Max
5	Relay 5	J2-5	Relay Output, Form C (SPDT)	Fuse 3	10 Amp Max
6	Relay 6	J2-6	Relay Output, Form C (SPDT)	Fuse 3	10 Amp Max
7	Relay 7	J3-1	Relay Output, Form C (SPDT)	Fuse 4	10 Amp Max
8	Relay 8	J3-2	Relay Output, Form C (SPDT)	Fuse 4	10 Amp Max
9	All Odd Number Relays ON				
10	All Even Number Relays ON				

#### NOTE:

The relays provide a fused source of voltage to the Load from the Battery when ON and Ground when OFF.

#### MATING CONNECTIONS

Designator	Function	Connector	Mating Part #	Contact, Typical
J1	PMC/Com	2 Pin Amp Mate-N-Lok	1-480698-0	350919-3
J2	Outputs	6 Pin Amp Mate-N-Lok	640585-1	350919-3
J4	Outputs/Power	4 Pin Amp Mate-N-Lok	1-480700-0	350919-3

#### MODULE SETTINGS

Module can be set for 1 of 16 address.  
Set four position dip switch per table  
to the right.

**X = Switch OFF**

DIP SW	MODULE	DIP SW	MODULE
4 3 2 1	Address	4 3 2 1	Address
0 0 0 0	A	X 0 0 0	I
0 0 0 X	B	X 0 0 X	J
0 0 X 0	C	X 0 X 0	K
0 0 X X	D	X 0 X X	L
0 X 0 0	E	X X 0 0	M
0 X 0 X	F	X X 0 X	N
0 X X 0	G	X X X 0	O
0 X X X	H	X X X X	P