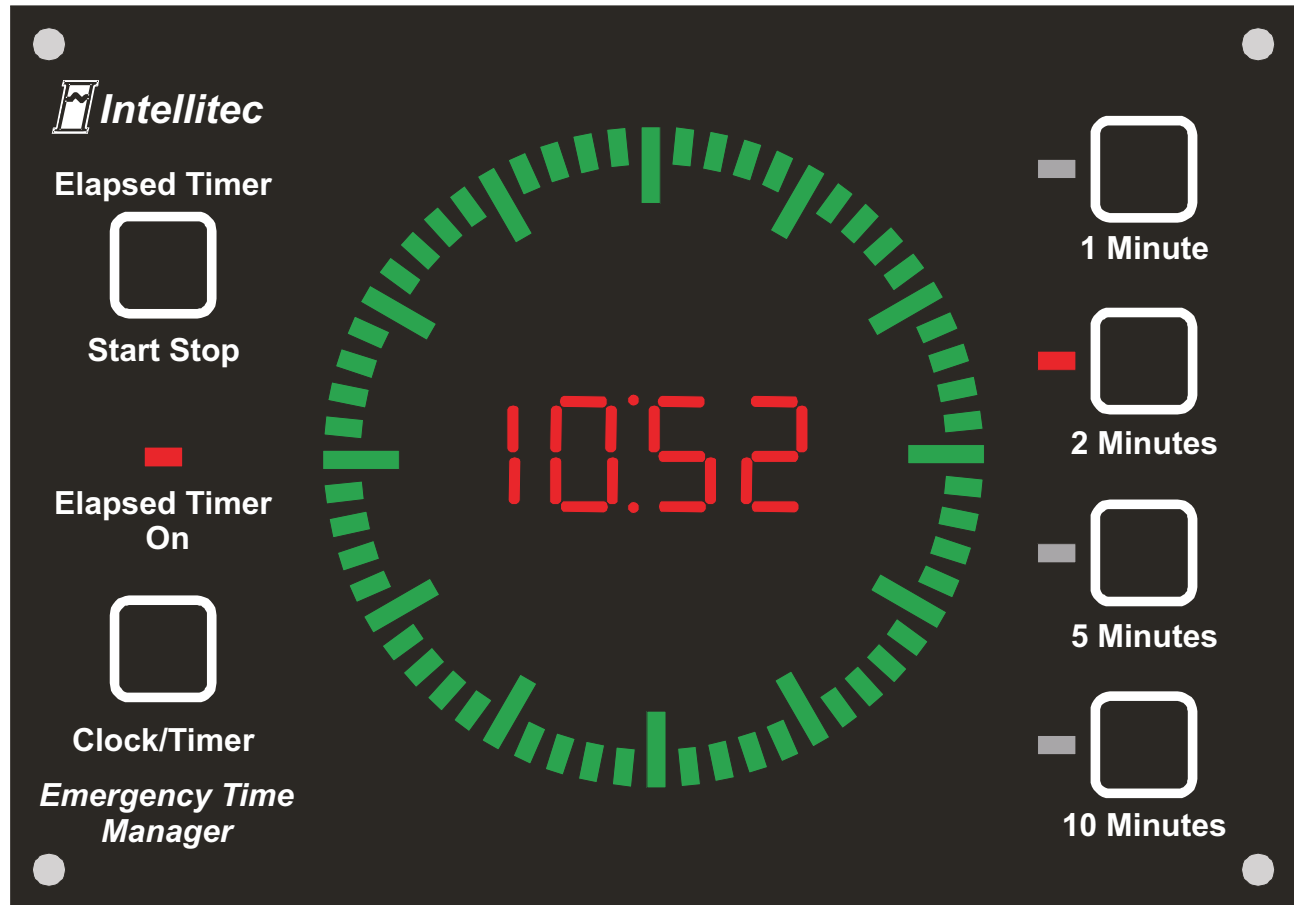


# *Emergency Time Manager*



Part Number: 00-00775-000

**Intellitec's *Emergency Time Manager*** is a clock and timer designed to assist Emergency medical personnel with time management; keeping track of critical timing events is often a difficult task. The clock is intended to be installed on the interior of an ambulance or other emergency vehicle.

#### **The Time Manager provides 4 functions:**

- Time of day in hours and minutes
- Sweep second hand
- Elapsed time in hours and minutes
- 4 timer buttons set alarm timer from 1 to 90 minutes



**Intellitec**

131 Eisenhower Lane North  
Lombard IL 60148  
630 268 0010 / 1 800 251 2408  
FAX 630 916 7890

P/N 53-00775-000 Rev. B 0021505

# ***Emergency Time Manager***

---

## **Functions**

### **Sweep Second Hand:**

Operates in all modes. Made up of 60 LEDs and provides the appearance of a sweep second hand.

### **4-Digit Display:**

In "time of day" and "elapsed time" modes, it will display hours and minutes. In "timer" mode, it will count down minutes and seconds.

### **Audible Alarm:**

Sounds at the end of a timing event.

### **Elapsed Timer Start Stop Button:**

When the elapsed timer "Start Stop" button is pressed the 4-digit display will change from time of day and begin counting elapsed time from Zero, in hours and minutes. The display is capable of displaying up to 99 hours, 99 minutes. The "Elapsed Timer On" indicator will illuminate when the elapsed timer is running and will go out when it is paused, or stopped.

When the "Start Stop" button is pressed a second time, the elapsed timer will pause and display elapsed time, if not already doing so. If pressed again, the elapsed timer will resume. When pressed and held for 3 seconds, the elapsed timer will stop and reset to zero.

### **Dimensions:**

6.75 X 4.75 X 1.25

Mount in 6"X 5" panel cut out using 4 screws

Thin enough to fit within wall

### **Clock/Timer Button:**

When the "Clock/Timer" button is pressed, the display will switch between time of day and elapsed time. When displaying time of day, the elapsed time timer will continue to run in the background.

### **1, 2, 5, 10 Minute Buttons:**

When one of these buttons is pressed, the display will begin counting down from it's respective time. If the button is pressed and held the display will increment in multiples of the respective time. This allows timers to be set up to 90 minutes. An LED adjacent to the respective button will illuminate while the timer is running. At the end of the countdown, an audible alarm will sound for 5 seconds. When the alarm stops, the indicator LED will go out and the display will revert back to what it was displaying prior to the countdown button being pressed. The elapsed time will continue to run in the background and will not be affected by the countdown.

### **Power Consumption and Protection:**

The Emergency Time Manager is designed to be connected to the vehicles electrical system. It's circuitry is protected against electrical surge and transient voltage conditions common in automotive applications. High voltages caused by "load dump" will not damage the clock.

The Time Manager will not detrimentally discharge the vehicles battery. Circuitry is included, which will turn the clock display off 20 minutes after the vehicles engine is shut off and charging voltages are not present. The clock will continue to run. This feature eliminates the need for an additional ignition sense wire and reduces power consumption to an acceptably low level. When the vehicle is started, the display will come back on. Only two connections are required, +Battery and Ground.



**Intellitec**

131 Eisenhower Lane North

Lombard IL 60148

630 268 0010 / 1 800 251 2408

FAX 630 916 7890

P/N 53-00775-000 Rev. B 0021505